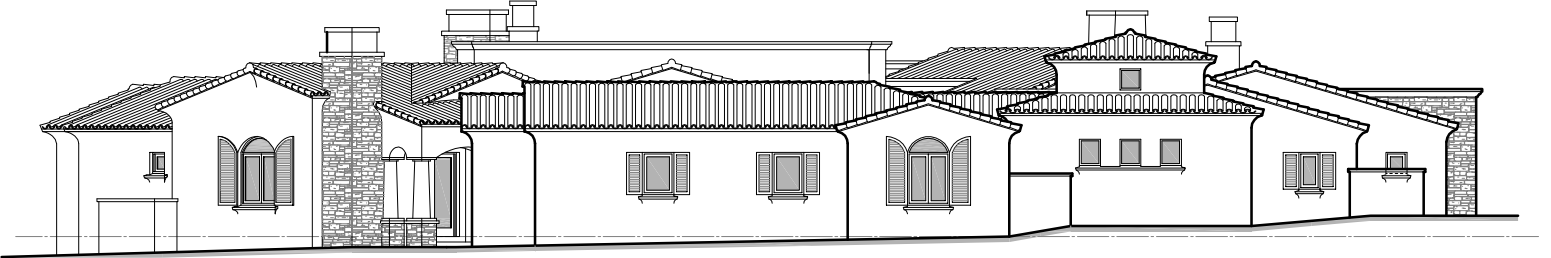


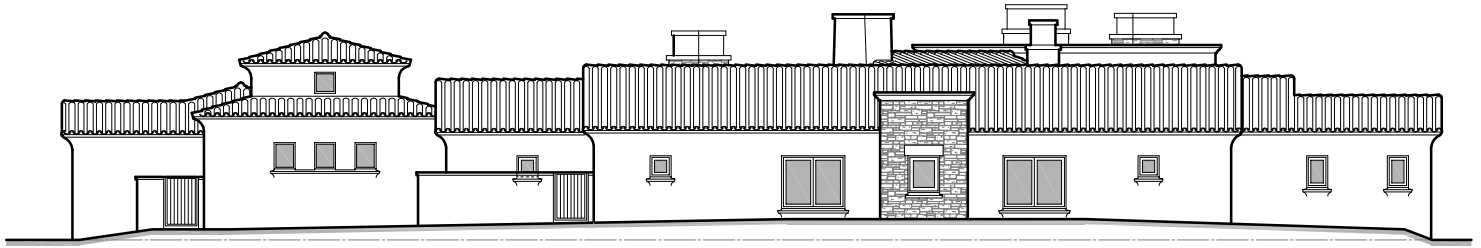
ENTRY/MOTOR COURT ELEVATION (SOUTH)

3/12 - 12'



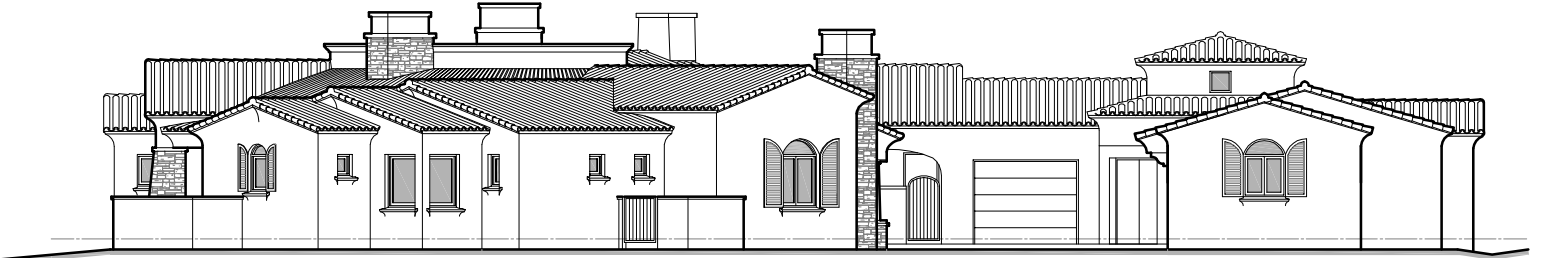
FRONT ELEVATION (SOUTH)

3/12 - 12'



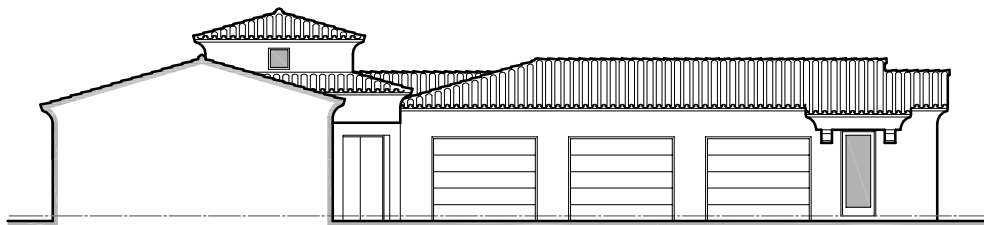
RIGHT ELEVATION (EAST)

3/12 - 12'



LEFT ELEVATION (WEST)

3/12 - 12'



MOTOR COURT ELEVATION (NORTH)

3/12 - 12'